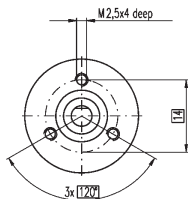
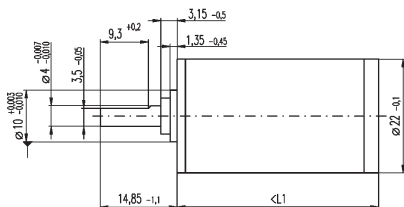


Ø22mm

## Gearheads: DC Motors & Gearbox

0.5 - 1.0 NM ø4mm Output Shaft

## Combinations



### Notes:

22mm planetary gearhead, supplied with fixing kit to suit motors opposite.  
Pinion supplied loose for fixing to motor shaft using Loctite 603.

Maximum Axial Load: 100N

Maximum Radial Load at 10mm from Flange: 70N

Operating Temperature Range: -15°C to +100°C

Mass: 55-94g.

### DISCOUNTS

1 - 5	List Price
6 - 19	-8%
20 +	-14%

PART NUMBER	Ratio	No. of Stages	Length L	Cont. Torque (Nm)	Peak Torque (Nm)	Max Speed	Eff.	Average Backlash	Price Each 1-5
HPCMAX110338	19:1	2	32.2	0.50	0.80	6000	70%	1.2°	£118.08
HPCMAX110339	84:1	3	39.0	0.80	1.20	6000	59%	1.6°	£124.64
HPCMAX110340	370:1	4	45.8	1.00	1.60	6000	49%	2.0°	£130.88
HPCMAX110341	1621:1	5	52.6	1.00	1.60	6000	42%	2.0°	£137.44

